

Customer :

customer

Customer part :

customer part

Comment :

Comment

S1=3.78

S2=3.75

Tmax=454

Tp S2=493.0

PI=0.5

HI=79

Sample =1725.80

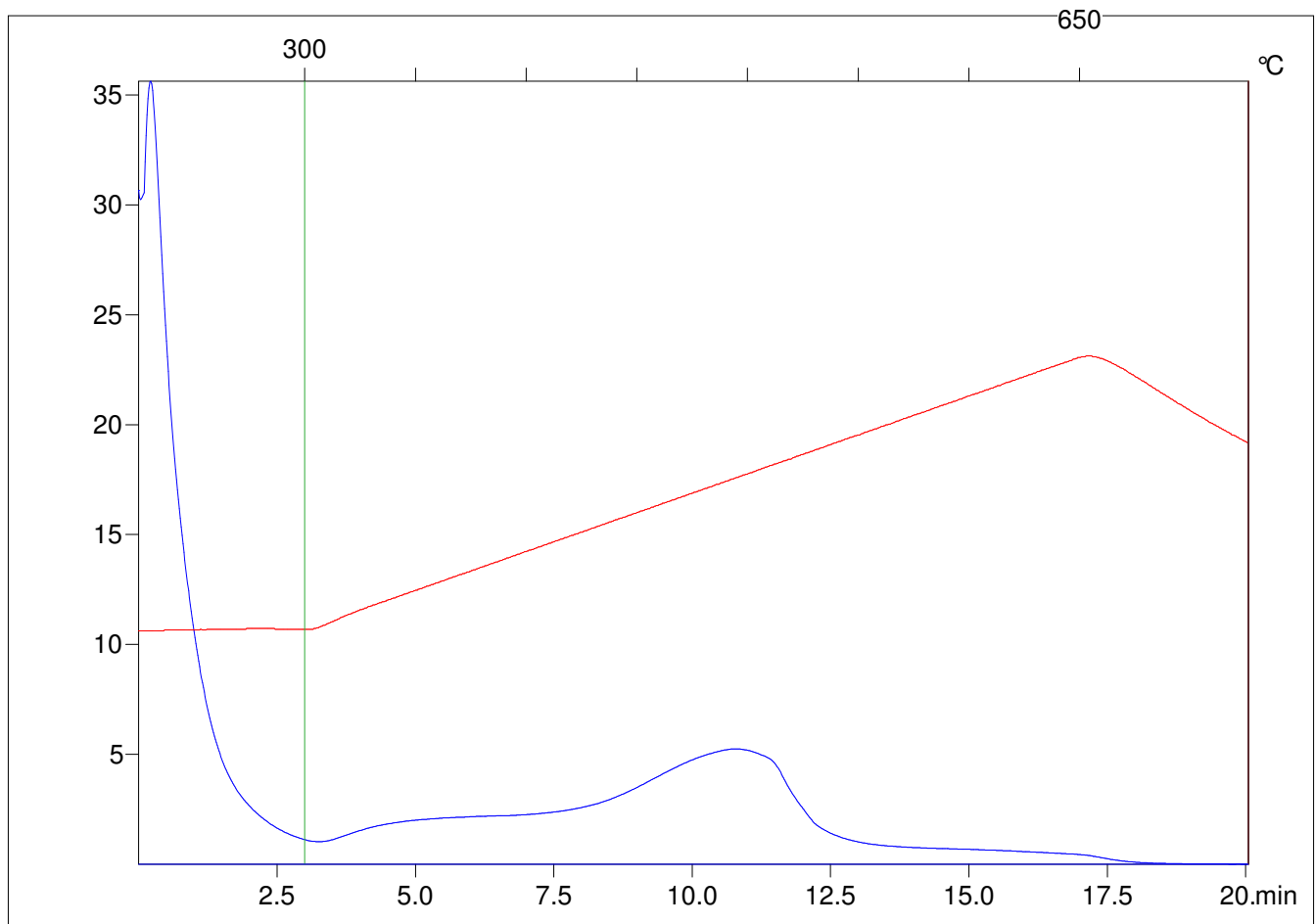
Method =Bulk Rock

Cycle=Basic

KFID(10*9)=1444

Qty =70.6

TOC=4.72



C:\VINC\PK2_1792\PK039.R00 : FID pyrolysis graphic

State Ok

Pyro Status Negative value

Oxi Status Negative value